



AUTO/MANUAL FOOT PEDAL SEALER

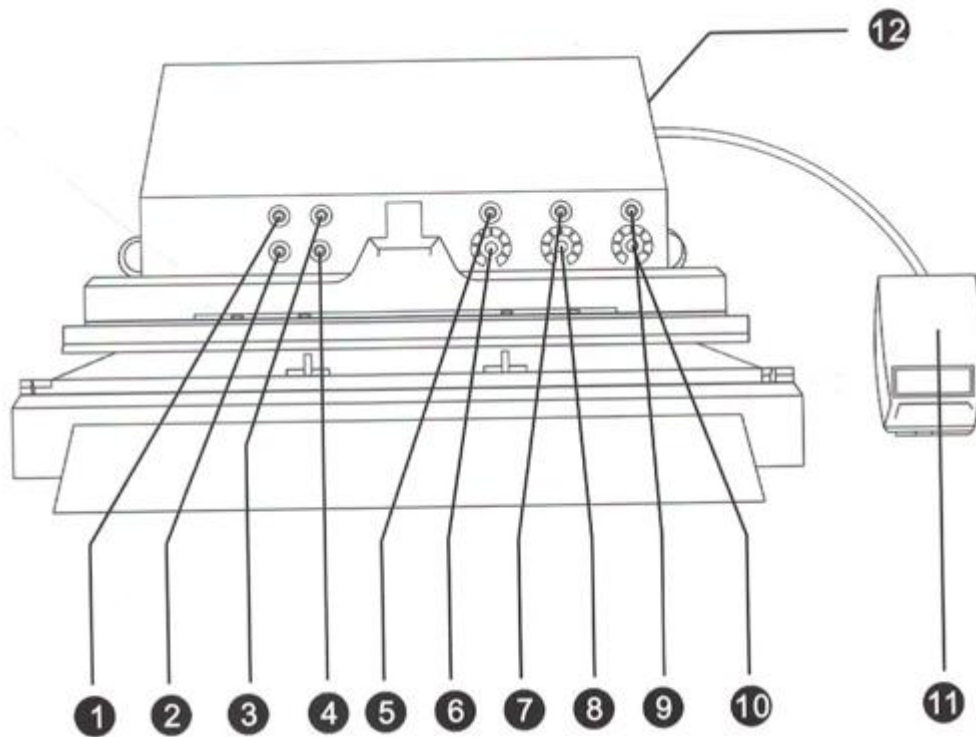
MANUAL NO. 9606



CONTENTS

INSTRUCTION	1
OPERATING INSTRUCTION	2
SPECIFICATIONS	3
CONSTRUCTION DIAGRAM	4
PARTS LIST	5
CIRCUIT DIAGRAM	6
ADDITIONAL INFORMATION	7

INSTRUCTION



1. Power indicator (red)
2. Main power switch
3. Automatic operation indicator (yellow)
4. Automatic/manual operation selector
5. Automatic sealing interval indicator (red)
6. Automatic sealing interval control knob
7. Cooling and solidification time indicator after sealing (yellow)
8. Control knob for cooling and solidification time after sealing
9. Sealing indicator (red)
10. Sealing time control knob
11. Foot switch
12. Fuse

OPERATING INSTRUCTION

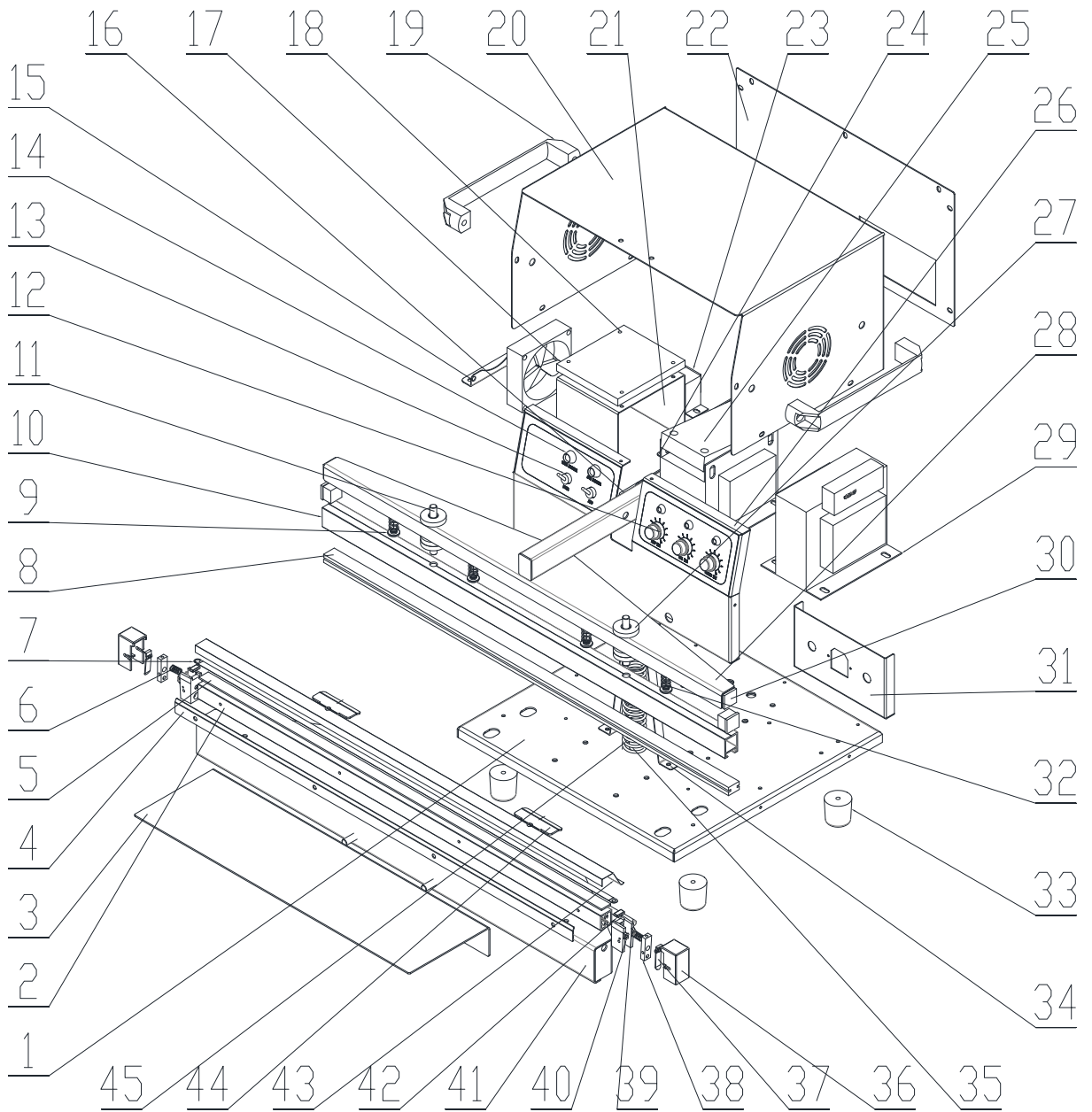
MANUAL MODE: First, turn on the POWER. The POWER INDICATION light will illuminate. Set the COOL TIME and SEAL TIME. The upper press frame of the machine will then activate. Place the bag to be sealed on the lower press frame, press the upper press plate with your hand, or step on the PEDAL to press it down to seal. Simultaneously, the COOL TIME light will turn green, and the SEAL TIME light will turn red. Once sealing is completed, the upper press plate will automatically pop up, and the green COOL TIME light and the red SEAL TIME light will disappear. (It is recommended to test the COOL TIME and SEAL TIME settings several times with an empty bag to achieve the ideal sealing result.)

AUTOMATIC MODE: First, turn on the POWER. The POWER INDICATION light will illuminate. Next, turn on the AUTO switch, and the AUTO INDICATION light will turn on. Set the AUTO TIME (please note, the upper press plate will automatically pop up and fall down, so set the AUTO TIME reasonably to avoid pinching your hands), COOL TIME, and SEAL TIME.

SPECIFICATIONS

Model	USS-FPS00001
Power	1500w
Max. seal Length	25.59 inches
Seal Width	0.19 inches
Max. Seal thickness	0.015 inches
Heat Time	0.2 ~ 3.0(sec)
Congeaed Time	1.0 ~ 8.0(sec)
Reset Time	1.0 ~ 8.0(sec)
Weight	55.11 Lbs
Dimensions	28.03×14.4×8.26 inches

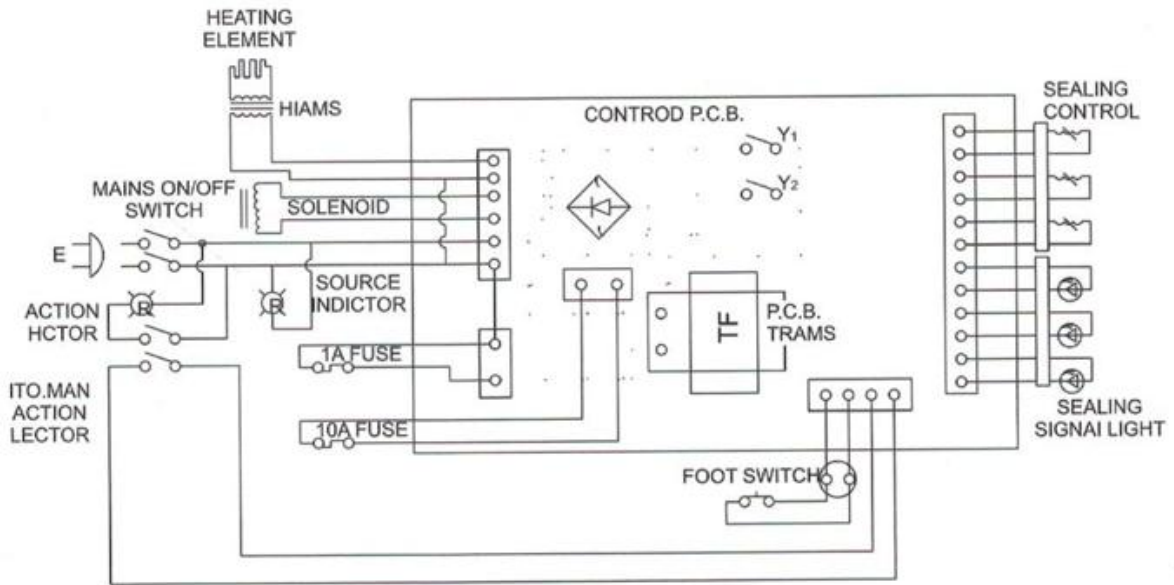
CONSTRUCTION DIAGRAM



PARTS LIST

1.BASE PLATE	2.LOWER JAW
3.OPERATING BOARD	4.CLAMP PLATE
5.LOWER SILICONE STRIP	6.COMPRESSION SPRING
7.HEATING ELEMENT	8.UPPER SILICONE STRIP
9.SPRING WASHER	10.UPPER JAW SUPPORT
11.PIN	12.TIMER KNOB
13.TOGGLE SWITCH	14.SIGNAL LIGHT
15.FAN SUPPORT	16.SUPPORT
17.FAN	18.CONTROL-PCB
19.HANDLE STRAP	20.TOP COVER PLATE
21.PCB SUPPORT	22.BACK COVER PLATE
23.PCB-TRANS FORMER	24.ANGLE PLATE
25.FLAT PLATE	26.CONTROL PANEL
27.RUBBER PAD	28.UPPER JAW
29.TRANSFORMER	30.CAP
31.BACK PLATE	32.SPRING FOR UPPER JAW
33.RUBBER FOOT	34.LIMIT STAND
35.SPRING LIMIT POST	36.HEATING ELEMENT SHIELD
37.ROTATING PLATE	38. BRASS CONTACT
39.SCROLL FOR CLOTH	40.HEATING ELEMENT SUPPORT
41.HEATING BASE	42.CERAMIC CHIP
43.TEFLON CLIP	44.CLIP FOR CLOTH
45.SEALING SPRING	

CIRCUIT DIAGRAM



ADDITIONAL INFORMATION

1. Always keep the sealing platform clean. Particular care should be taken to remove any residue of overheated plastic from the barrier tape.
2. Do not clean the sealing platform with anything wet.
3. If the bottom barrier tape (under the heating element) becomes worn, the heating element may short to earth, and this can damage the element.
4. When replacing a heating element, always check the condition of the bottom barrier tape, because it is also important. When replacing a heating element, the same specification of thermoelectric wire must be used.
5. After a long period of use, the condition of the top pressure pad should be examined for wear. Obviously, any deformation will affect the quality of the sealing and replacement may become necessary.

Contact

Feel free to visit our website:

www.ussolid.com

You can email us at service@ussolid.com